

MDSCare 3.0.15 Installation Instructions

As always, be sure to backup your entire MDSCare folder BEFORE you load this update!

We have posted a patch for MDSCare on the LTC Solutions website Download page. <http://www.ltc-solutions.info/download.htm>. Click on the **ORANGE MDSCare 3.0.15 Patch!** button. This update includes the RUGIT update for those who have added that module to their facility. If you are interested in RUGIT, please email pam@ltc-solutions.info.

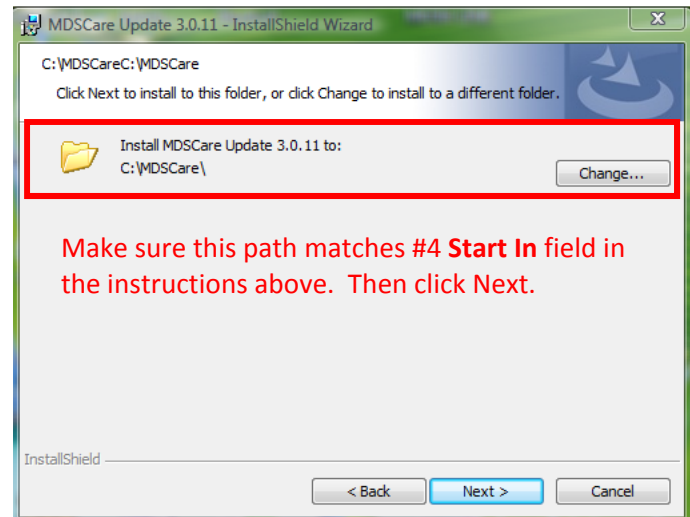
PLEASE make sure that everyone is out of MDSCare and also **be sure that you change the destination folder to match the current location of your MDSCare folder.**

To verify the location of your MDSCare folder:

1. Go to your desktop
2. Right click on your MDSCare icon
3. Normal mouse click on Properties
4. Note the information in the **Start In** field. _____
5. This is the location of your MDSCare folder (Example: C:\MDSCare)

Patch Installation Instructions: MAKE SURE EVERYONE IS OUT OF MDSCARE BEFORE YOU PROCEED

1. Go to the Download page (above)
2. Click the Orange MDSCare 3.0.15 Patch button
3. When the popup appears, click Run
4. If you get a Publisher Warning, click Run, otherwise
5. **Verify that everyone is out of the system** and click Next
6. **On the InstallShield Wizard screen (right) change the Install location to match #4 above**
7. Click Next through the remaining screens
8. Click Finish on the final screen
9. Click Close/Finish
10. Done!



Please be certain that you are running the CORRECT Validation Utility Tool/MDS Checklist **BEFORE** you archive! The latest version will display **Validation Utility Tool Version 1.2.0 – REV 09/01/2011** when the VUT/MDS Checklist popup appears. **WARNING!!!! If your VUT version is still 1.1, contact us immediately.**

ALWAYS carefully check your FVR's to make certain all records have been processed and accepted!!

The MDSCare 3.0.15 patch includes ALL prior patches.

MDSCare Update 3.0.15 Includes:

1. **In Care Plan Area-** Fixed "Return to Care Plan Select" menu item. Directs you to the CP select screen instead of the Resident Information Screen.
2. **Enhanced MDS Warning** area to alert you if no admission assessment has been completed on a resident.
3. **Enhanced Due for Review Report** to display "NO COMP" if there is no MDS 3.0 Comprehensive Assessment completed for the resident. Omits resident from report if resident is on "hold".
4. **Tightened the Archive Program** so you MUST indicate a quarter when you are archiving a quarterly.
5. **Improved the MDS 3.0 Archive Record Report.** Can specify a date range to display selected records.
6. **For Illinois Users Only...** Added a IL Section S report.
7. **Added buttons on the MDS data entry screens** to display infections and incidents from your additional options area.

MDSCare 3.0.15 Installation Instructions

The version MDSCare Update 3.0.13 was skipped. We went from 12 to 14.

Recap of prior updates:

RUGIT.

Mds reports for pre and post 10-01-11.

MBR report changes.

Updated RUG Grouper to accommodate the 10/1/2011 CMS changes. You may notice that some of the AI (Assessment Indicator) codes have changed. Please refer to the RAI Manual, Chapter 6 for details on the new AI codes.

Updated ARD edits for PPS assessments to check for the new PPS Assessment Schedule ARD dates.

New ICD-9 changes effective 10/1/2011. **IF** you see a red warning message on the main menu screen of MDSCare that your ICD-9 File is not updated, it means that your ICD-9 update did not run at the end of the MDSCare Update. Some security prevents exe's from loading at the end of the update. To update manually, simply click on System Maintenance/General File Maintenance/Disease/ICD-9 Code and on the ICD-9 Maintenance Screen press F3. This will load your ICD-9 Update. If you don't see a warning message, you should be good to go.

Changed data entry screens to reflect the items used to calculate RUGs in **RED.**

Added the most recent RAI User's Manual to the Help Menu in MDSCare. From the main menu, click on **Help** and then MDS3 User's Manual. You must have Adobe Reader installed on your computer to view this. Also, please remember that the manual is constantly being updated by CMS. You must stay current with the most recent RAI changes by visiting https://www.cms.gov/NursingHomeQualityInits/45_NHQIMDS30TrainingMaterials.asp#TopOfPage

This link is also available on our website at www.ltc-solutions.info

Updated the PPS Scheduler to reflect the new changes.

Updated Medicare Billing Report to accommodate the 10/1/2011 changes. Please check the last page of the MBR for important policy information on the effective date for EOT, EOT-R and COT OMRA's.

WINZIP Enhancement: We have added an enhancement that eliminates the need for WinZip to create/zip your electronic transmission files. So if you need to change computers, you **DO NOT NEED TO PURCHASE WINZIP!**

Added a new "Archived Records Report". To access this new report go to the main menu, click Reports/MDS Related/#58 3.0 Archived MDS Report. This displays all current residents in your system. If the resident is on "Hold" they will be omitted from this report.

Recap of previous MDSCare 3.0.11:

672 and 802 may now be edited on-screen prior to printing. This will allow you to update your 802/672 and give the surveyors a printed copy that you have manually updated the morning they arrive. The edit areas are available by going to Main Menu/Other Functions/Multiple Resident Options. **Items that you edit on the reports will NOT change the data entry fields on the MDS! It updates the form ONLY.** You will have the option to fill the report with the last saved MDS data or the last edited report.

A condensed MDS is now available for printing both open and archived assessments. You will see a Print Option "Print Condensed Listing". Please check with your State RAI Coordinator to see if they will accept this Condensed MDS as your paper copy. Of course you will still have the ability to print the CMS MDS as usual.

MDS Care 3.0.15 Installation Instructions

Automatic fix of CAA and Open Assessment Files. We have added the ability for you to automatically fix these files when you encounter the file corruption popup. If your computer blocks your ability to perform this function, you can still contact technical support for assistance.

Added SOT and EOT date fields to Billing reports. Also added a feature to identify corrected PPS records on the MBR. Original records that have been corrected will be noted with the word "CORRECTED". This will alert the billing staff that the information from this record should NOT be used to bill Medicare. The corrected records will be noted with the word "INACTIVATED" or "MODIFIED". Of course, inactivated records should not be used to bill Medicare either. The replacement record should be used.

Electronic Submission Zip file name simplified, changed from xmitxml2011.... To zip2011....

Care Cards have been updated and enhanced to pull from 3.0 data.

Additional 3.0.11 Changes:

If resident on hold, will not print on Weight reports.

Changes to pressure ulcer report to pull from 3.0 data.

Fixed and enhanced various behind the scenes items.

Update CAA's when a timeout occurs to fix problem when coming back in.

Recap of MDS 3.0.10 Changes:

Added a new last archived file that will be used for:

-AdHoc Report

-672/802

-ADL Report

RUGIII Calculation fix for Medicaid Case Mix

CAA Printing on view discharge repaired

Section Section V0100 now allows 99's

Zip programs have been changed to allow zipping of transmission files without using WinZip

Short Stay on RUGIV calc repaired

If resident on HOLD, they will not appear on 672/802

Section V removed from IL Quarterlies