

Validation Utility Tool Installation Instructions

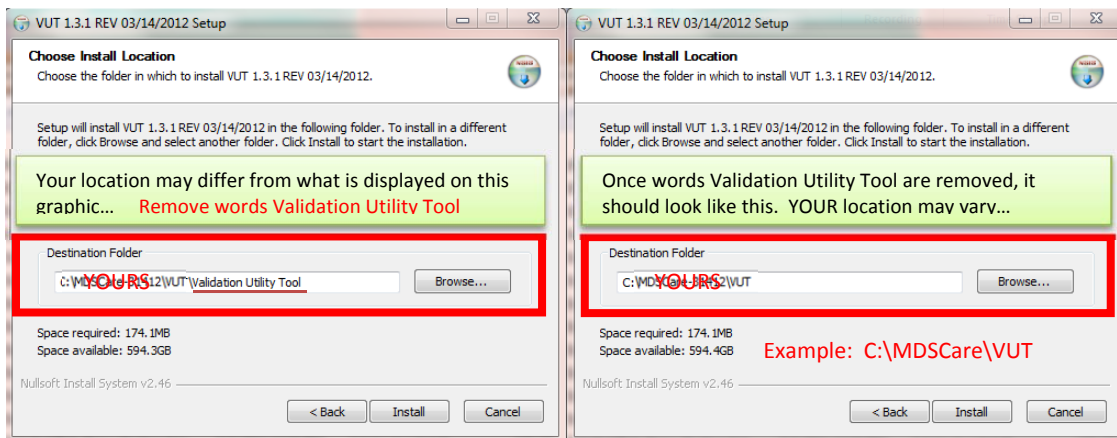
First, verify the location of your MDSCare folder:

1. Go to your desktop
2. Right click on your MDSCare icon
3. Normal mouse click on Properties
4. Note the information in the **Start In** field. _____
5. This is the location of your MDSCare folder (It could look like this although it may vary: C:\MDSCare)

Please be certain that you are running the CORRECT Validation Utility Tool/MDS Checklist **BEFORE** you archive! The latest version will display **Validation Utility Tool Version 1.3.1 for Spec Version 1.10 – REV 03/14/2012** when the VUT/MDS Checklist popup appears. [See Below.](#)

Validation Utility Tool (VUT) Installation Instructions: MAKE SURE EVERYONE IS OUT OF MDSCARE BEFORE YOU PROCEED

1. Go to the Download page at www.ltc-solutions.info
2. Click the GREEN “NEW Validation Utility Tool” button
3. When the popup appears, click Run (it may take a few minutes to download this file)
4. If you get a Publisher Warning, click Run, otherwise
5. Verify that everyone is out of the system and click Next
6. Be sure to **DELETE the default location** and change it to **match #4 above**
 1. Click the Browse button
 2. Browse to your MDSCare folder noted in #4 above
 3. Open your MDSCare folder if it’s not already open
 4. Click one time on the VUT folder
 5. Click OK
 6. Your destination should now show the path noted in #4 above. Example:
C:\MDSCare\VUT\Validation Utility Tool
 7. Backspace over the text “Validation Utility Tool”
 8. Your path should now read for example C:\MDSCare\VUT
 1. **<your MDSCare location>\VUT**
 2. **<your MDSCare location>** should match #4 above
7. Click Install
8. Click Finish



Validation Utility Tool Installation Instructions

ALWAYS carefully check your FVR's to make certain all records have been processed and accepted!!

Once installation is complete, open MDSCare, go to an open assessment, perform an MDS Checklist. Your VUT should now display the following version information... If it doesn't, the VUT was not loaded properly into the correct location.

